



Moving forward from Low trophic aquaculture to AI intensive fish farming applications

The role of Dept of Fisheries & Aquaculture, U. Patras, Missolonghi
Associate Prof. John A. Theodorou

1



FISH·AI

Artificial Intelligence

<http://radio-megaro.com>

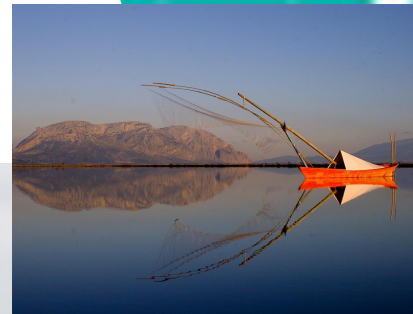


Dept of Fisheries & Aquaculture U. Patras, Missolonghi Campus



Dept. of FISHERIES &
AQUACULTURE, U.Patras

We are based: **MESOLONGHI**
in the heart of the Central
Mediterranean

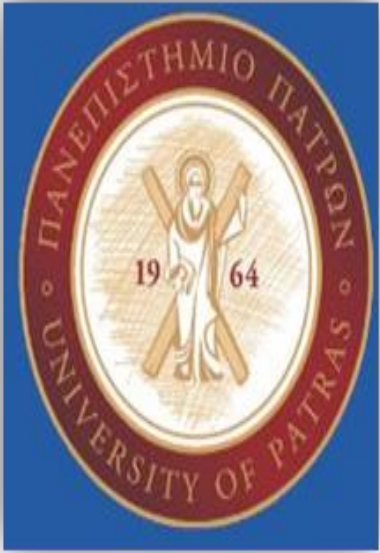


Further readings: www.ascidianis.upatras.gr

«Ανάπτυξη Βέλτιστων πρακτικών ελέγχου ξενικών ειδών ασκιδίων και λοιπών ειδών (μαλάκια, σπόγγοι) στις εγκαταστάσεις των μυδοκαλλιεργειών και μετρίασμό των οικονομικών επιπτώσεων της εισβολής» ΟΠΣ (ΜΙΣ) 5048463 .

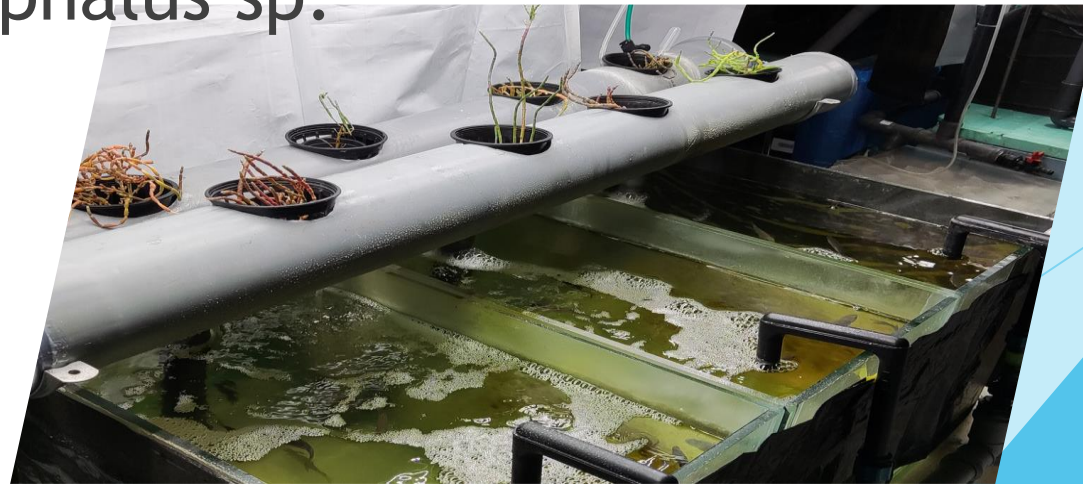
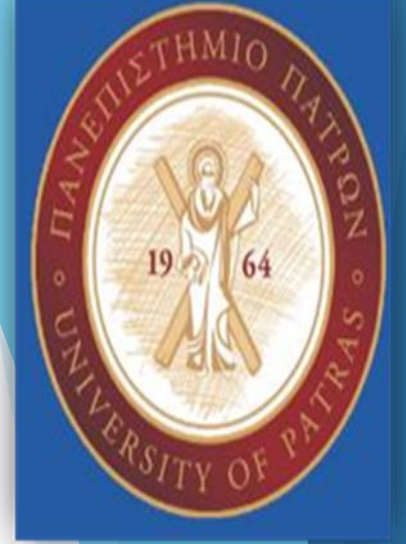


"When an ecosystem is disturbed, it gets unbalanced." - Euronews Green (OCEAN)
- YouTube

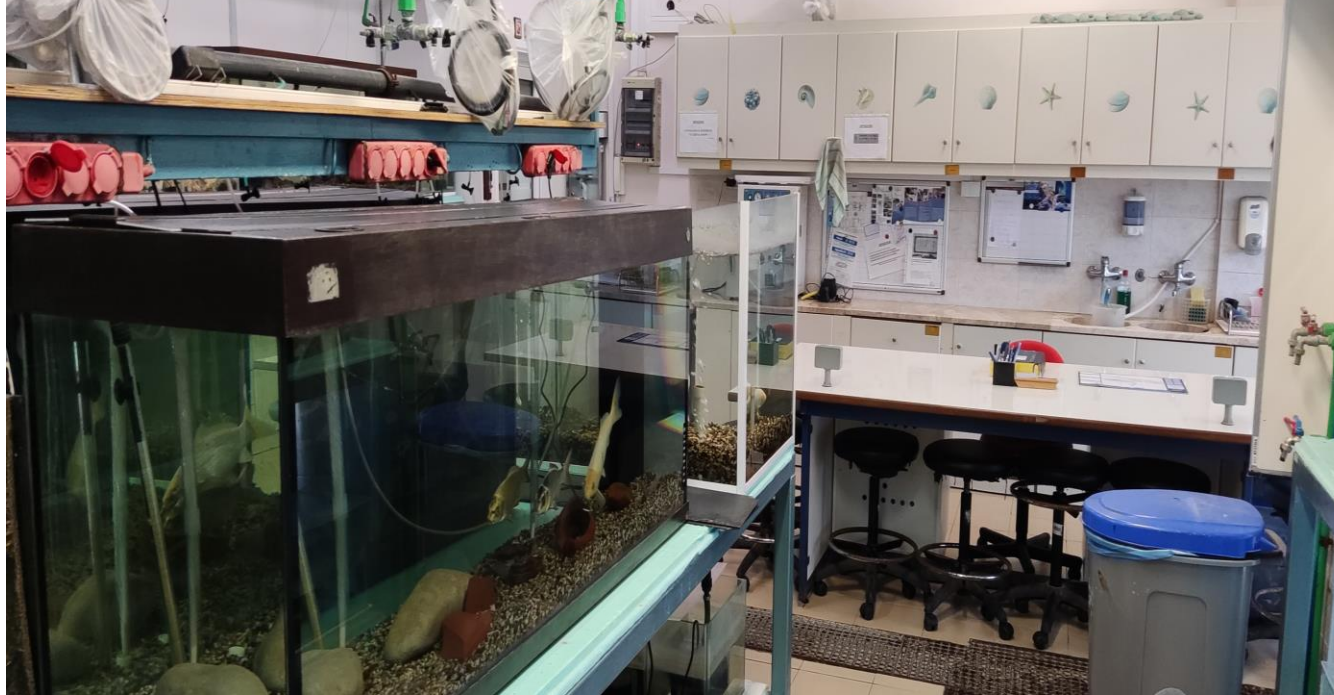


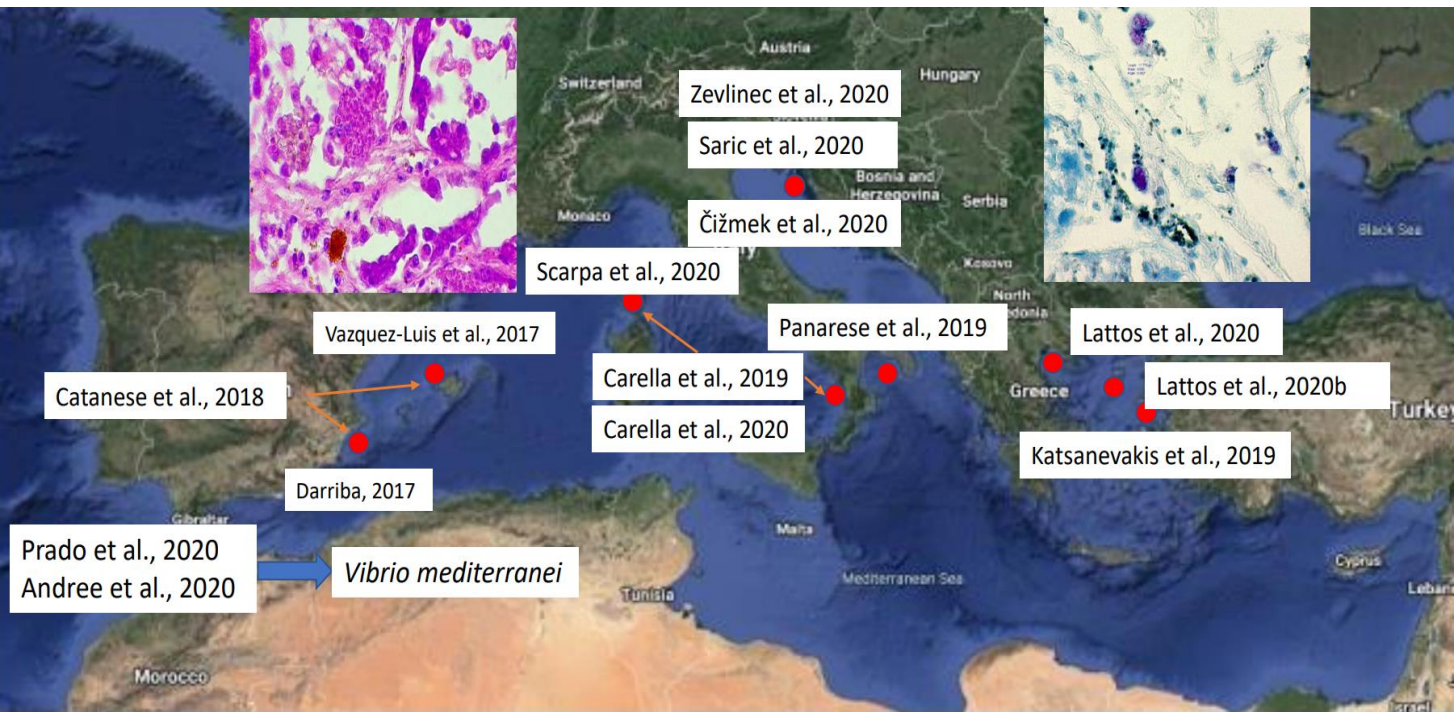
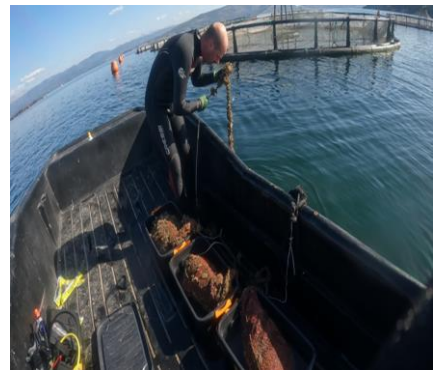
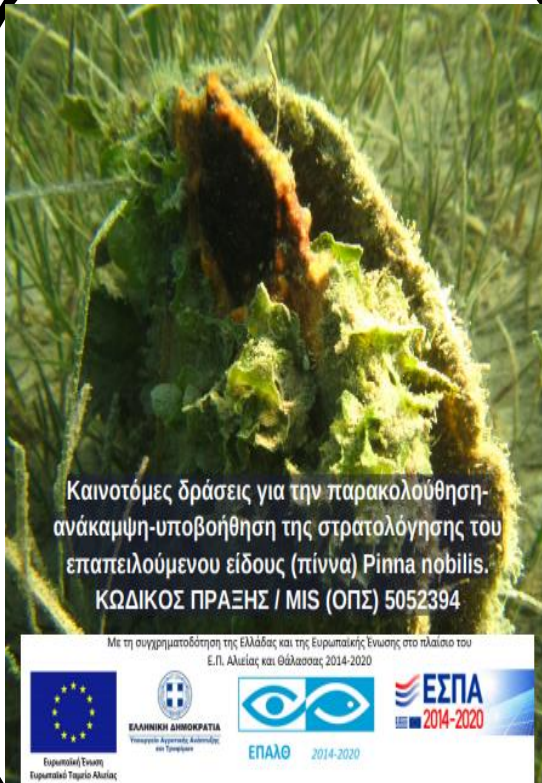
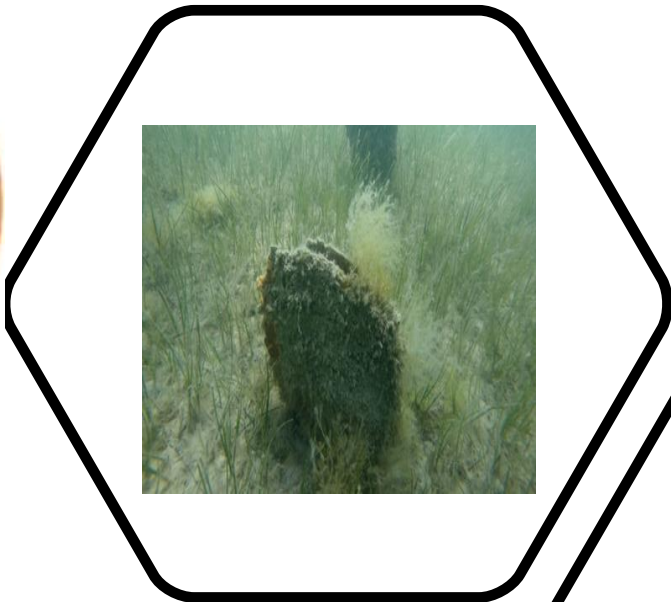
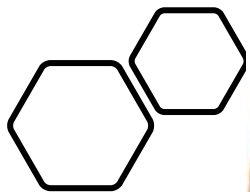
Salt Aquaponics Mesolonghi lagoon species

- ▶ Salicornia
- ▶ Sea bass, seabream
- ▶ Cephalus sp.



Wet Lab Aquaponics





Καινοτόμες δράσεις για την παρακολούθηση-ανάκαμψη-υποβοήθηση της στρατολόγησης του επαπειλούμενου είδους (πίννα) *Pinna nobilis*.
ΚΩΔΙΚΟΣ ΠΡΑΞΗΣ / MIS (ΟΠΣ) 5052394





Pinna nobilis

ΑΠΟΣΤΟΛΗ ΜΑΣ

ΜΕΛΕΤΗ, ΠΡΟΣΤΑΣΙΑ & ΥΠΟΒΟΗΘΗΣΗ ΤΗΣ ΑΝΑΚΑΜΨΗΣ ΤΩΝ ΑΠΕΙΛΟΥΜΕΝΩΝ ΜΕ ΕΞΑΦΑΝΙΣΗ ΠΛΗΘΥΣΜΩΝ.

ΧΡΗΣΗ ΚΑΙΝΟΤΟΜΩΝ ΤΕΧΝΟΛΟΓΙΩΝ ΜΕ ΤΗΝ ΣΥΝΕΡΓΙΑ ΤΩΝ ΤΟΠΙΚΩΝ ΔΙΟΙΚΗΤΙΚΩΝ ΑΡΧΩΝ, ΤΩΝ ΕΠΑΓΓΕΛΜΑΤΙΩΝ ΤΗΣ ΘΑΛΑΣΣΑΣ (ΑΛΙΕΩΝ, ΥΔΑΤΟΚΑΛΛΙΕΡΓΗΤΩΝ, ΚΑΤΑΔΥΤΙΚΩΝ ΚΕΝΤΡΩΝ, ΝΑΥΤΙΛΙΑΣ) & ΤΗΣ ΕΠΙΣΤΗΜΗΣ ΤΩΝ ΠΟΛΙΤΩΝ

INNOVATIVE ACTIONS FOR THE MONITORING-RECOVERING - ENHANCEMENT OF THE NATURAL RECRUITMENT OF THE ENDANGERED SPECIES (FUN MUSSEL) PINNA NOBILIS.

Greek Operational Programme for Fisheries and Sea 2014-2020
MIS 5052394

Study & promotion of artificial enhancement of *Pinna nobilis* stocks recovering, by using of innovative technologies in collaboration of the marine professionals, citizens & public stakeholders.

www.PinnaSOS.upatras.gr



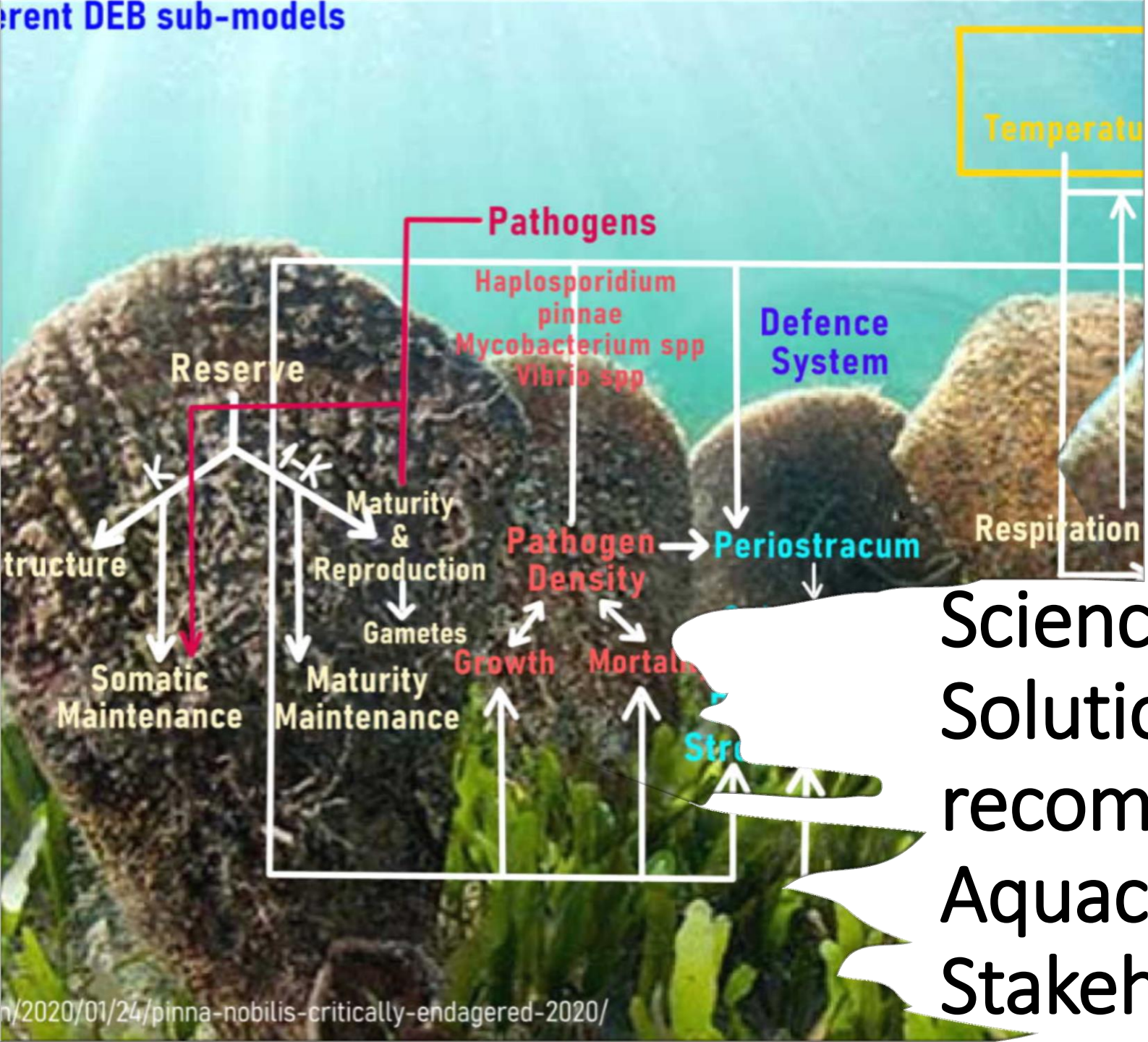
Further readings:

www.pinnasos.upatras.gr

https://www.youtube.com/watch?v=14_q9-Anj0s&t=19s

Καινοτόμες δράσεις για την ταρακολούθηση-ανάκαμψη-υποβοήθηση της στρατολόγησης του επαπειλούμενου είδους (πίννα) *Pinna nobilis*. ΚΩΔΙΚΟΣ ΠΡΑΞΗΣ/MIS (ΟΠΣ) 5052394





ΠΑΝΕΠΙΣΤΗΜΙΟ ΠΑΤΡΩΝ
UNIVERSITY OF PATRAS

4^η Ανοικτή Ημέρα Υδατοκαλλιέργειας

Το ΤΜΗΜΑ ΑΛΙΕΙΑΣ & ΥΔΑΤΟΚΑΛΛΙΕΡΓΕΙΩΝ (ΤΑΥ) του Πανεπιστημίου Πατρών διοργανώνει

Ανοικτή Ημερίδα

📍 ΣΥΝΕΔΡΙΑΚΟ ΚΕΝΤΡΟ ΤΑΥ

Science Based Solutions recommends Aquaculture Stakeholders Engagement





AMVARKIKOS SA (SIOUTAS D.) FISH FARM

Amvrakikos Gulf

FLOATING
EQUIPMENTS TO
SUPPORT
UNDERWATER SCUBA
ACTIVITIES





Pinna nobilis Spat Collectors Maliakos, Construction by Mussel farmers (AGORIANOS C.)

Under the consulting umbrella of the
Fisheries Authority of Fthiotis.





IMPROVING THE COMPETITIVENESS OF GREEK FISH FARMERS THROUGH THE IMPLEMENTATION OF INTELLIGENT SYSTEMS FOR FISH PATHOLOGICAL DIAGNOSIS & DISEASE TREATMENT PROPOSAL AND SUPPORTIVE ACTIONS FOR FARMING RISK MANAGEMENT (MIS 5067321)

1



FISH·AI

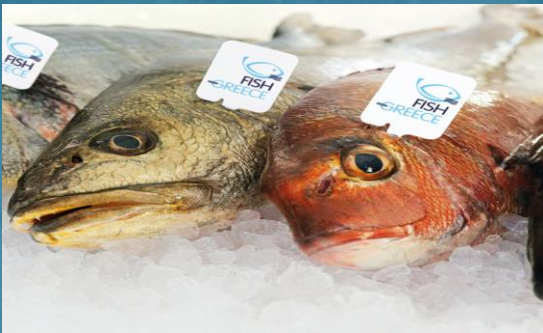
Artificial Intelligence

<http://radio-megaro.com>



«IMPROVING COMPETITIVENESS OF THE GREEK FISH FARMING THROUGH DEVELOPMENT OF INTELLIGENT SYSTEMS FOR DISEASE DIAGNOSIS & TREATMENT PROPOSAL AND RELEVANT RISK MANAGEMENT SUPPORTING ACTIONS (MIS 5067321)
EU-GREECE OPERATIONAL PROGRAM OF FISHERIES EPAL 2014-2020

Contributors



ARISTOTLE
UNIVERSITY
OF THESSALONIKI



FISHAI

Artificial Intelligence

01 DEPT OF FISHERIES & AQUACULTURE (MESOLONGHI)

02 DEPT OF COMPUTER ENGINEERING & INFORMATICS



02 DEPT OF BIOLOGY

03



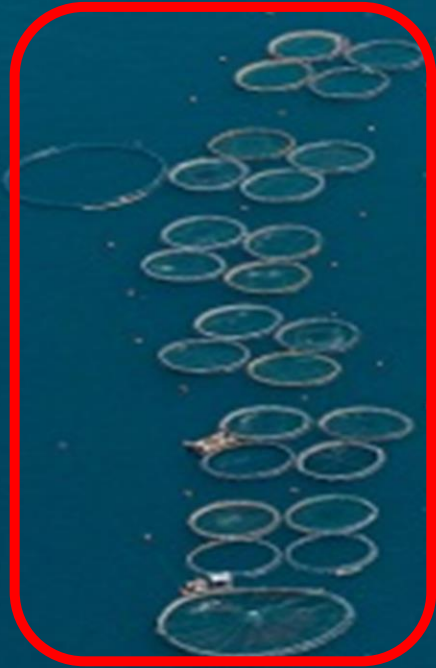
04 UNDER THE SUPPORT OF:



More Information (under development)

www.fishai.upatras.gr

Thank you



«IMPROVING COMPETITIVENESS OF THE GREEK FISH FARMING THROUGH DEVELOPMENT OF INTELLIGENT SYSTEMS FOR DISEASE DIAGNOSIS & TREATMENT PROPOSAL AND RELEVANT RISK MANAGEMENT SUPPORTING ACTIONS (MIS 5067321)
EU-GREECE OPERATIONAL PROGRAM OF FISHERIES EPAL 2014-2020